

# 标准与选购配备 Standard & Optional accessories

塑机型号 Model	YS760	YS1080	YS1180	YS1380	YS1600	YS1880	YS2280	YS2880	YS3380	YS3800	YS5200	YS6380	YS7800	YS10000	YS13000	
五铰机构锁模 5 Points vertical double toggle mechanism																
双缸平衡式注射系统 Dual-cylinder balance injection system																
多级压力、多级速度注射 Multi-stage pressure & speed injection																
注射背压可调 Back-pressure adjustment device																
低压模具保护 Low - pressure mould protection																
液压顶抽插芯 Hydraulic core pulling & inserting																
多种液压顶出方式 Multiple hydraulic ejector modes																
机械、电气安全装置 Mechanical, electrical safety devices																
集中润滑系统 Concentrate lubrication system																
位置尺控制 Linear transducer control																
氮化螺杆料筒 Nitrided screw and barrel																
旁通过滤装置 Bypass filter device																
名牌液压元件优化组合 Optimized composition of hydraulic elements of the famous brands control																
多组抽插芯 Multiple hydraulic core pulling & inserting																
多重CPU电脑系统 Multiple options of computer CPU systems																
液压安全装置 Hydraulic safety device																
加长喷嘴 Extended nozzle																
机械手 Robot																
干燥料斗 Hopper dryer																
自动上料机 Auto - loader																
塑料除湿机 Automatic plastic dehumidifier																
模温控制机 Mould temperature controller																
冷水机 Chiller																
特殊螺杆和料筒 Special screw & barrel																
PVC风机装置 PVC fan device																
半闭环控制系统 Semi - closed loop control system																

标准配备 Standard 选购配备 Optional - 无 N/A  
我们保留技术发展而改动配置的权利(Remark: We reserve the right to make any accessories improvement without prior notice)

## 宁波永生塑料机械有限公司

NINGBO YONGSHENG PLASTIC MACHINERY CO.,LTD.

Add: 268 Chunyuan Road, Panhuo Industry Zone, Yinzhou District, Ningbo City, Zhejiang, China

国内销售部电话(Domestic business line) : +86-574-8823-1671

国际贸易部电话(Global business line) : +86-574-8812-3378

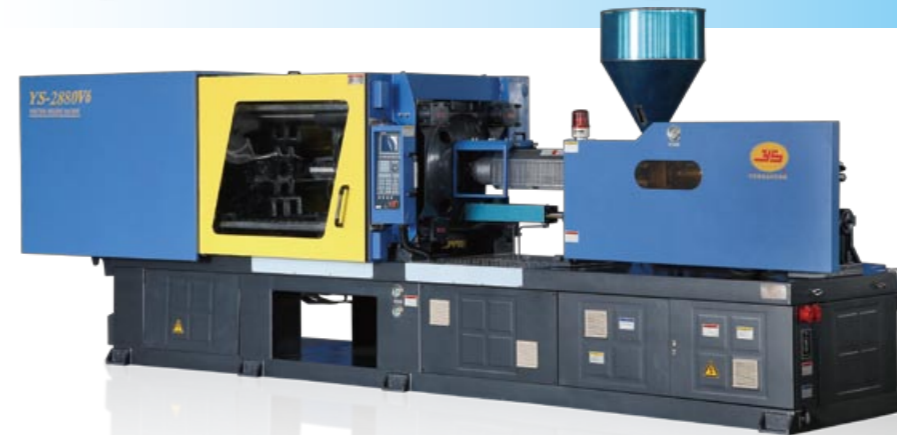
传真(Fax) : +86-574-2881-3463

E-mail: ys@yscn.cn www.yscn.cn www.yongshengmachine.com



ISO9001:2008

# YS SERIES 塑料注射成型机 Injection Molding Machine



伺服节能精密注塑机  
Servo energy saving injection molding machine

BMC专用注塑机  
BMC injection molding machine

混双色注塑机  
Mixed dual color injection molding machine

2011版

**Y**  
YONGSHENG PLASTIC MACHINERY

创造最大的价值，源于专业……  
Create the greatest value from the profession……



## 公司简介 Company Profile

宁波永生塑料机械有限公司创建于1998年，位于风景秀丽的港城宁波，地处沪杭甬高速公路旁，距宁波栎社机场和北仑港码头不到半小时路程，交通十分便利。

公司拥有高素质的技术人员和管理人员，员工精干，享誉业内。公司董事自七十年代即开始研究、设计、生产注塑机，是业内资深的工程师。公司设备先进，拥有高精度的数控加工中心，同时采用先进的三维软件设计。

公司现生产二十几种规格注塑机，锁模力范围70吨-1300吨，注射重量为80g-8000g多类注塑机，集机、电、液的最新技术于一体包括：K系列、伺服节能系列、薄壁系列、清(混)双色系列、BMC、PET、PVC、PC、瓶盖等系列专用机。整机配备日本、美国、意大利、法国、德国、台湾等国家和地区生产的液压和电控元件，具有高刚性、强锁模力、高注射压力、精密耐用等特点，使永生塑机拥有海内外众多客户。

追求突破性与创新是永生塑料机械有限公司一贯风格，在瞬息万变的科技领域中实际了解客户的需求，创新求变，精益求精。由于您的支持与爱护，使永生公司不断在稳定中成长，现已成为中国高品质的注塑机械制造商之一。

在此热忱期盼与您的合作，更期盼您不吝的赐教，使我们能更好地为您服务。选择永生，是您全方位提高市场竞争力的最佳选择。

Ningbo Yongsheng Plastic Machinery Co., Ltd. was founded in 1998, located in Ningbo, a beautiful port city in China and by Shanghai-Hangzhou-Ningbo Expressway, within 30 minutes' drive from Lishe Airport in Ningbo and Beilun Port, with very convenient transportation conditions.

The Company has high-quality technical personnel and management personnel, and enjoys a good reputation in the industry. The directors of the Company started the research, design and manufacture of plastic injection molding machines in the 1970s and are senior engineers in this industry.

The Company has advanced equipment, owns high-precision numerical control machining center and applies the leading 3-D software for design.

Now, the Company produces various plastic injection molding machines of more than 20 sizes, with mold clamp force ranging from 70 ton to 1300 ton and injection weight ranging from 80g to 8000g. Its product integrate the latest mechanical, electrical and hydraulic technologies into one, including K series, servo energy-saving series, thin-walled series, clear (mixed) double-color series, BMC, PET, PVC, PC and bottle-cap series machines. The complete machines are equipped with hydraulic and electrical control elements branded from Japan, the US, Italy, France, Germany and Taiwan, and have the characteristics of high rigidity, high clamp force, high injection pressure, high precision and being durable. Yongsheng plastic injection molding machines have many customers home and abroad.

Seeking for breakthrough in technologies and innovations is the constant style of Ningbo Yongsheng Plastic Machinery Co., Ltd., and understands customer's actual demands in the technical field changing at every moment, and make innovations to cope with such change for the best quality. With your supports and love, Yongsheng is growing up steadily and now is already one of high-quality plastic injection molding machine manufacturers in China.

Here we expect cooperation with you and advices and suggestions from you, in order for us to provide better services to you. Yongsheng's products are your best choice for improving your competitiveness.

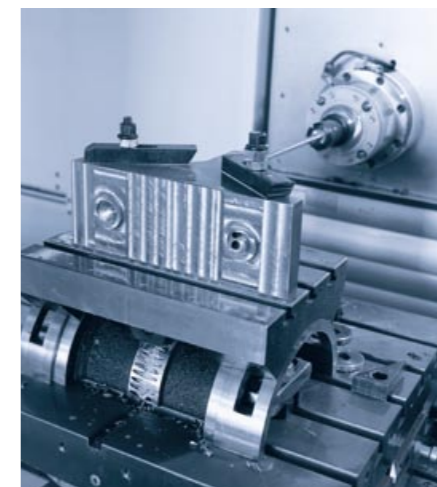
## 企业荣誉 Company Honor



## 研发/设备 R&D / Equipment

为了产品品质的保证，永生公司配备了大量先进的检测设备和优秀的检验员与计量工程师，分布在产品制造的各个环节。机器出厂前都要进行连续运转试验，并且对于诸如锁模力、注射速率、预塑速率、开闭模速度等机器所有要求的参数和精度进行逐一检测，并记录在每个机器的质量档案中。始终要求出厂的机器达到百分之百的合格。

To ensure the product quality, Yongsheng has a lot of advanced testing equipments and excellent inspectors and metering engineers, allocated to each operation steps of product manufacturing. Before delivery, we carry out continuous running test of the machines, and test each parameter and accuracy, including mold clamp force, injection rate, pre-injection rate, mold opening and closing speed and record these parameters down in the quality file of each machine. We always require that each machine delivered to the customers is 100% qualified.

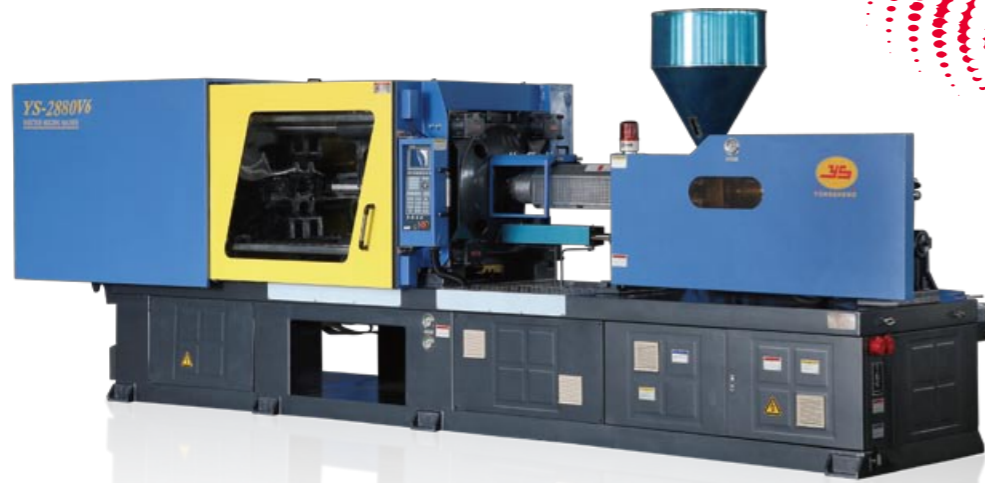


永生 — 您的理想合作伙伴

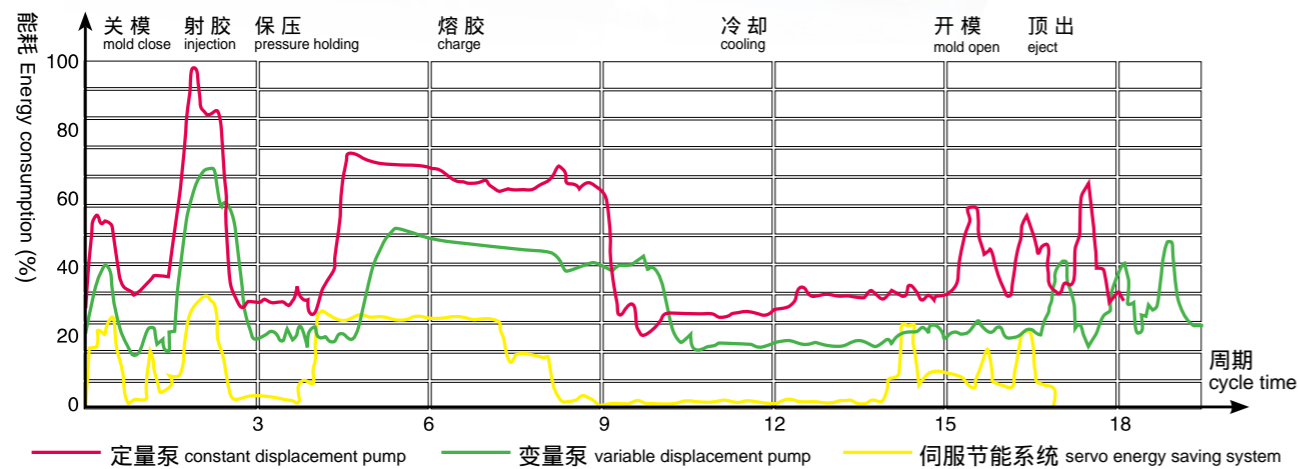
塑料注射成型机 Injection Molding Machine

# 永生V6系列伺服节能精密注塑机

YSV6 Series Energy Saving High-precision Injection Molding Machine



## 功率消耗曲线比较图 Test of Energy Efficiency



## 节能效果比较 Test of Power-saving

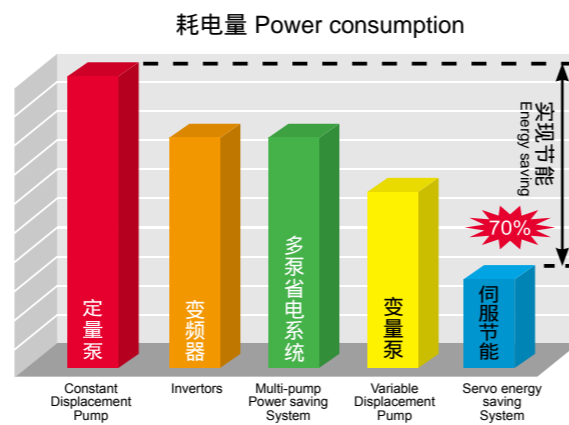
根据产品、成型条件的不同，伺服节能注塑机比传统定量泵注塑机相比，最高节能可达70%，相比变量泵注塑机节能可达40%。

According to different products and molding conditions, servo power-saving injection molding machine can save 70% more power than traditional constant displacement pump injection molding machine, and 40% than variable pump injection molding machine.

## 耗电量比较 Comparison

注：使用右述各项节能系统的最佳条件：保压时间长、冷却时间长、一分钟2~3模以内的产品、厚件产品等，上述各种方法的节能效果才能显著。

Remark: To achieve best performance of those power saving system, production should be in this case: Long pressure holding time, long cooling time, and productivity less than 2~3 cycles within one minute, thick walled products. These power saving systems will have outstanding efficiency.



注：射出量按聚苯乙烯比重1.05计算；因产品不断改良，参数变更时恕不另行通知。

Notes: The Shot weight is based on polystyrene at specific gravity of 1.05. For product improvement, the parameters are subject to change without prior notice.

## 节能效果实例 Test of Power-saving

模数 total shots: 100模  
模具 mold: 透镜 lens

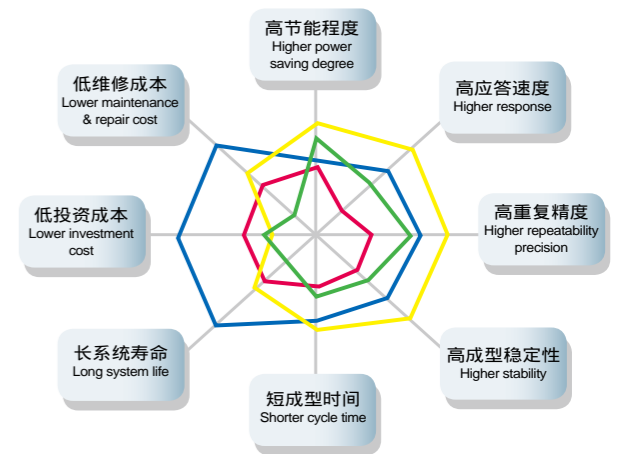
材料 material: PMMA  
机器 machine type: YS-1180V6

项目	ITEMS	单位 UNIT	标准定量泵 Constant displacement pump	YSV多泵系统 Multi-pump power saving system	变量泵 Variable displacement pump	伺服节能系统 Servo system
成型周期	Cycle time	second	16	17	16	16
产品重量	Product weight	gram	3.610	3.621	3.541	3.596
产品总重量	Total weight	gram	361.0	362.1	354.1	359.6
消耗能源	Power of consumption	Kw/h	3.573	2.7137	1.8910	1.0935
1小时耗电量	One hour power consumption	Kw/h	8.039	5.741	4.253	2.452
1年耗电量	One year power consumption	Kw/h	70421.6	50291.2	37256.3	21479.5
1年生产的电费	One year electricity cost	RMB	56337.3	40232.9	29805.0	17183.6
节能系数	Power-saving rate	Kwh/kg	9.90	7.49	5.34	3.04
与标准机相比的节能效果 Power-saving efficiency than standard pump			/	24.05%	47.08%	69.40%

计算条件：24小时，365日运行，电费0.8元/Kwh Calculation condition: working for 24 hours/day, 365 days; electricity charge: 0.8 RMB/Kwh

## 节能系统的比较 Compare the power saving systems for injection molding machine

- 闭回路变量泵  
Variable displacement pump with closed loop
- 多泵省电系统  
Multi-pump power saving system
- 伺服节能  
Servo system
- 变频器  
Invertors



**节能，低运营成本**  
实现了节能，降低了运营成本，与全电机相比，大幅度减低投资及保养成本。

**性能卓越**  
响应快速，提高了速度稳定性。

**低噪音**  
大幅度降低机器噪音。

**人性化操作**  
人性化操作接口，参数设定，并附带计算机软件。

**多国语言系统支援**

**Energy saving, cost saving**  
With the realization of energy saving, lower down the operation cost. As compared with the full electric machine, it has greatly reduced the investment cost and maintenance cost.

**High performance**  
Fast response, improvement in speed stability

**Low noise level**  
Greatly reduce the noise produced by the hydraulic system

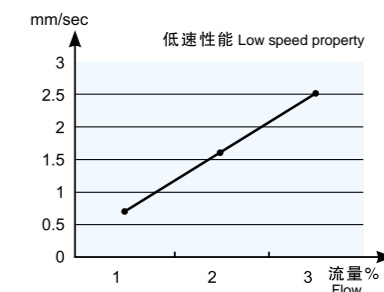
**User friendly**  
With advanced user friendly HMI, the parameter setting and operations are very simple and easy.

**Multi-language system available**

## 低速稳定 Low velocity stability

压力及流量闭环控制，在低压及低流量操作中表现尤其出色，射胶速度在小于1mm/sec时无爬行，脉冲，稳定性高。系统可按实际产品工艺要求，任意设定压力及流量，避免多余热量产生，油温相对传统注塑机稳定。此外，运动时压力流量自动补偿，保持压力与流量的稳定性，控制精准及重复精度高。

The system pressure and flow rate are closed-loop controlled, which has great performance under low pressure and flow rate operations, the machine works excellent stability of injection velocity less than 1mm/s, no crawling and pulsating. Therefore, the hydraulic system will operate in any pressure and flow rate regarding to the demand from the production operation. This reduces the heat generation inside the system and creates a more stable hydraulic system. Additionally, while the hydraulic system is in active operation, the machine pressure and flow rate will be automatically compensated in order to produce a high precision and repeatability product.

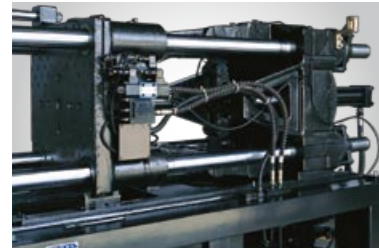


# 永生YS系列产品介绍 YS Series Products Introduction

## YS系列节能注塑机 YS Series Energy-Saving Injection Molding Machine

YS系列采用箱式桥梁结构活动模板及高刚性全连体后模板，经有限元素分析能防止模板变形，耐疲劳，重复精度高，合模力分配均称，制品剪精度高，大大延长模具寿命，降低了制品成本。

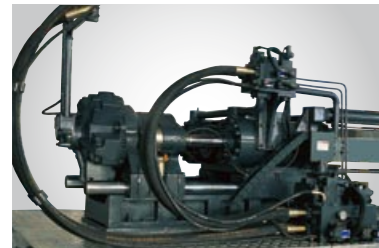
YS series has moving platen featuring box type bridge structure and full-connected rear high-rigidity mold platen. Through finite element analysis, it can prevent deforming of mold platen, resist against fatigue, have high repetition accuracy, distribute mold closing force uniformly, greatly increase mold's service life and reduce the molded parts cost.



### 合模单元 CLAMPING UNIT

内卷五支点曲肘式锁模结构，大大提高锁模部分结构刚性和精度。  
箱式桥梁结构活动模板及高刚性全连体后模板，经有限元分析强化，保证模板不易变形且经久耐用。  
拉杆由优质合金结构钢镀铬制成，高强度且耐疲劳。  
配备低压模具保护装置。  
多段锁模压力、速度及位置控制。  
液压油马达驱动齿圈调模。  
多种液压顶出模式。

Internally-rolled 5-point double toggle mold clamp structure, greatly increases rigidity and precision of the mold clamp unit.  
With box type bridge structure, moving platen, and high-rigidity continuous rear platen reinforced through finite-element analysis, we guarantee that the mold platens are not deformable and are durable.  
The tie rods are made of high-quality structural alloy steel plated with hard chromium, with high mechanical strength and fatigue strength.  
Provided with low-pressure mold protection device.  
Multi stages controlling of mold clamp pressure, speed and position.  
Mold thickness adjusted through ring gear driven by hydraulic oil motor.  
Several hydraulic ejection modes.



### 注射单元 INJECTION UNIT

采用双导柱支承，双缸平衡注射装置，保证螺杆注射前进过程中受力平衡、均匀。  
优质合金氮化或镀铬螺杆、氮化料筒，耐腐蚀及耐疲劳，大大增长使用寿命。  
喷嘴对中微调装置。  
高扭力液压马达驱动螺杆预塑装置。  
多段注射速度、压力、位置设定。  
针对不同特性工程塑料，提供专用螺杆料筒，确保制品成型品质。

Use of double guide posts and dual-cylinder balance injection device, guarantees that balanced and uniform forces are applied on the screw during injection and moving forward.  
High-quality alloy screw nitride or with chromium plating, and nitride barrels, are protected against corrosion and fatigue, which greatly increase their service life.  
With fine adjustment of nozzle centering.  
Screw preplasticizing driven by high torque hydraulic motor device.  
Multiple injection speed, pressure and position settings.  
Special screws and barrels are provided according to different properties of engineering plastics to ensure the molding quality of finished products.



### 润滑单元 LUBRICATION UNIT

采用容积式电动润滑器，自动集中润滑，油路分配均匀，润滑效率高，增长曲肘寿命。  
With use of volumetric electrical lubricator, automatic centralized lubrication and uniform oil distribution in the pipeline, the machines have high lubrication efficiency and long toggle life.

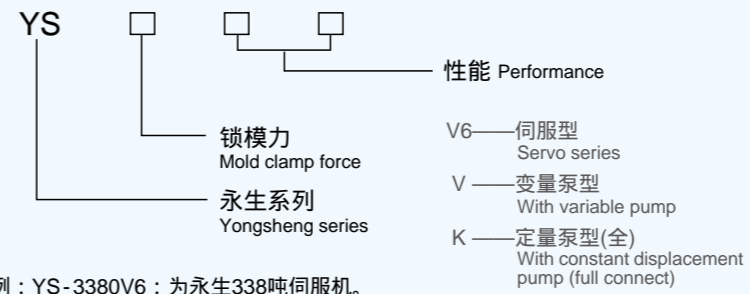


### V系列变量泵配置 V SERIES VARIABLE PUMP CONFIGURATION

节能，低运营成本	Energy saving, cost saving
性能卓越	High performance
低噪音	Low noise level
人性化操作	User friendly
多国语言系统支援	Multi-language system available

注：本产品介绍中的照片与实际机台规格不同，请以实际配备为准。  
Notes: If photos contained in this product booklet are different from sizes of actual machines, the actual machines shall prevail.

### 型号解析图 Model Illustration



例：YS-3380V6：为永生338吨伺服机。  
eg: YS-3380V6: Yongsheng 338Ton Servo motor machine.

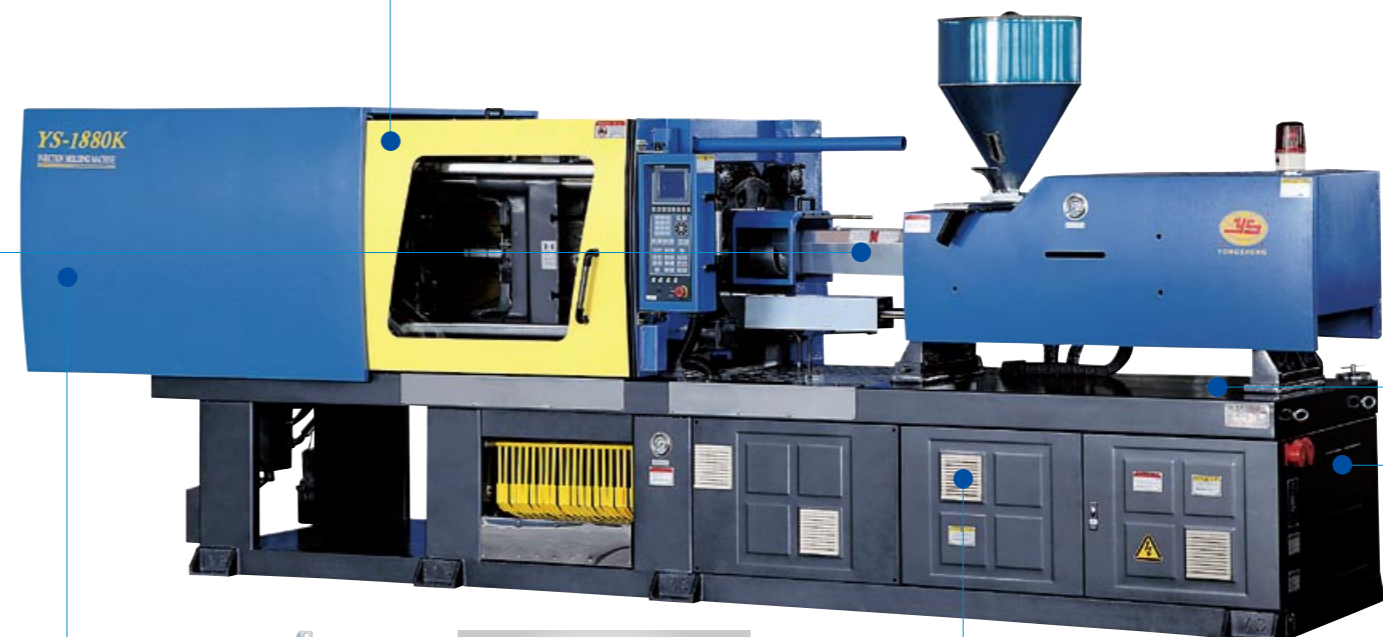
H ——混双色(夹层)注塑机  
Mixed dual-color (sandwich) plastic injection molding machines  
P ——分清双色注塑机  
Clear dual-color plastic injection molding machines  
BMC ——BMC(电木)热固型专用机  
BMC (bakelite) thermosetting plastic injection molding machines  
G系列薄壁蓄能注塑专用机  
G series thin-walled plastic injection molding machines with accumulator  
G2双伺服高速高效薄型专用机  
G2 double servo high-speed and high-efficiency thin-walled plastic injection molding machines



### 液压单元 HYDRAULIC UNIT

采用世界著名品牌油泵及控制阀，精密控制液压机构的力、速度及方向，确保整机准确性、可靠性、稳定性和耐用性。  
定量泵控制系统，输出稳定、高响应。  
主要液压元件、密封件均采用世界知名品牌。  
管路布置更为合理美观，维修保养容易。

Well-known oil pump and control valves in the world are used, to execute accurate controlling over the force, speed and direction of hydraulic mechanism and ensure the accuracy, reliability, stability and durability of the machine.  
Control system of the constant displacement pump ensures steady outputs and high response.  
Main hydraulic elements and seals are international well-known brands.  
The pipelines are arranged more reasonably and better, and thus ensure easy maintenance.



### V6系列伺服节能配置 V6 SERIES SERVO ENERGY-SAVING CONFIGURATION

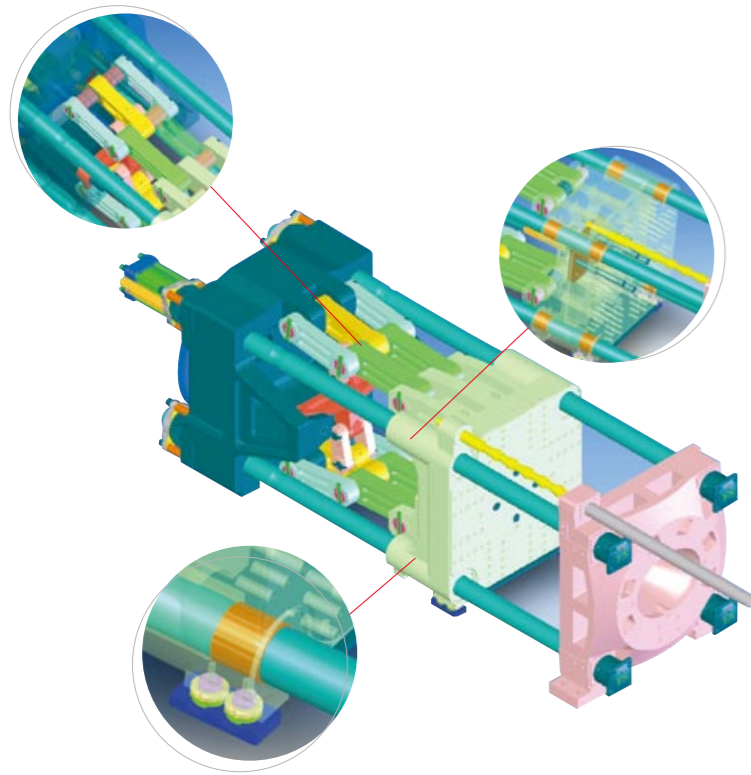
根据产品、成型条件的不同，伺服节能注塑机比传统定量泵注塑机相比，最高节能可达70%，相比变量泵注塑机节能可达40%。  
Depending on different products and molding conditions, plastic injection molding machines with servo energy-saving configuration can save at most 70% energy and 40% as compared with respectively traditional machines with constant displacement pump and the machines with variable pump.



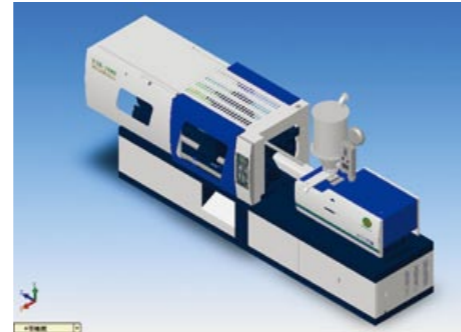
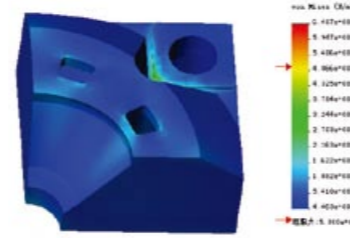
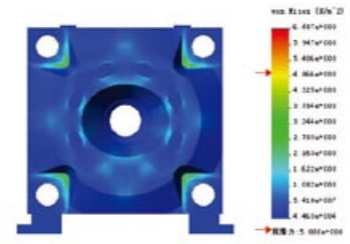
### G系列薄壁蓄能注塑专用机 G2系列伺服高速高效专用注塑机

G SERIES THIN-WALLED PLASTIC INJECTION MOLDING MACHINES WITH ENERGY SAVING(FOR SPECIAL PURPOSE)  
G2 SERIES SERVO HIGH-SPEED AND HIGH-EFFICIENCY PLASTIC INJECTION MOLDING MACHINES(FOR SPECIAL PURPOSE)

G2系列机型根据(PP、PE薄壁)产品不同，最小成型周期可达4-6秒。  
G2 machine series can reach minimum molding cycle of 4-6 seconds depending on different products (PP, PE thin-walled)



三维整体设计系统 3D integrated design system



## 永生G型系列高速注塑机(特种机)

YSG Series High-speed Injection Molding Machine for Special Purpose



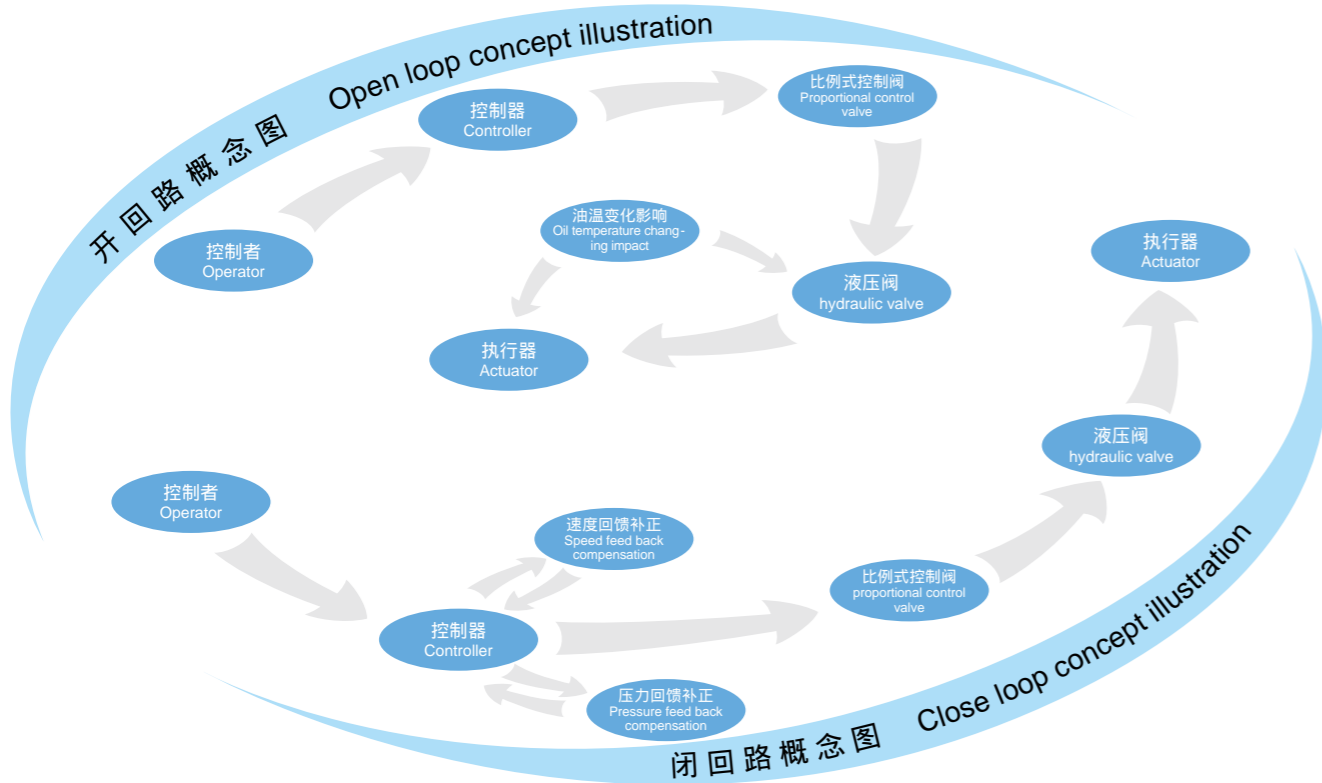
G系列为结构紧凑且功能强大的注塑机，开发用于生产薄壁的产品，主要特征是基于系统性平台的模块，高速及高压射胶，可以使您的产品需求和生产过程达到最佳匹配。

G series is compact and powerful injection molding machine, and is designed to manufacture thin-walled products. Its main characteristics are its system-platform-based modules and high-speed and high-pressure injection, which can realize optimum matching of your product quality demand and production process.



项目	NAME OF ITEM		YS-1180G		YS-1880G		YS-2280G	
注射部分	Injection unit	单位						
螺杆规格	Screw type		A	B	A	B	A	B
螺杆直径	Screw diameter	mm	30	34	38	42	38	42
螺杆长径比	Screw L/D ratio	L/D	20	17.5	22	20	22	20
理论注射容积	Theoretical shot volume	cm <sup>3</sup>	91	117	181	221	181	221
注射重量(PS)	Shot weight	g	82	106	165	201	165	201
注射压力	Injection pressure	Mpa	168	130	189	155	189	155
注射速度	Injection speed	mm/s	300		300		400	
螺杆转速	Screw rotation speed	r.p.m	5-200		5-200		5-200	
合模装置	Clamping unit							
合模力	Clamping force	KN	1180		1880		2280	
移动模板行程	Opening stroke	mm	330		420		480	
模厚	Mould thickness	mm	150-380		180-550		200-565	
拉杆内距(水平×垂直)	Space between tie-bars (Hxv)	mm	360X360		460X460		520X500	
模具定位孔	Mould register hole force	mm	125		125		125	
液压顶出力	Ejector force	KN	45		60		60	
顶出行程	Ejector stroke	mm	80		150		150	
顶出杆根数	Ejector quantity	PC	5		5		5	
其他	Others							
油泵电机功率	Motor Power	KW	15-30		15-30		18-36	
电热功率	Heater capacity	KW	3.95		7.7		7.7	
机器尺寸(长宽高)	Machine dimensions (LxWxH)	m	3.85X1.25X1.7		5.26X1.43X2.06		5.58X1.34X2.08	
机器重量	Machine weight	t	3		4.8		6.2	
油箱容积	Oil tank capacity	L	250		320		400	

注：射出量按聚苯乙烯比重1.05计算；因产品不断改良，参数变更时恕不另行通知。  
Notes: The Shot weight is based on polystyrene at specific gravity of 1.05. For product improvement, the parameters are subject to change without prior notice.



# BMC变量节能专用注塑机(特种机)

BMC variable and energy - saving plastic injection molding machines (for special purpose)

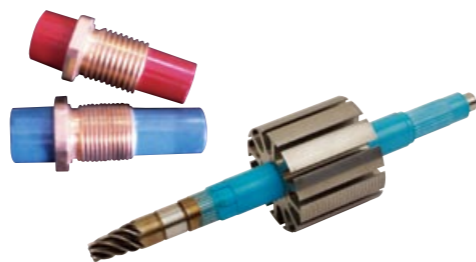


## BMC 系列专用注塑机

BMC series plastic injection molding machines

BMC是以特殊不饱和聚脂为主的热固硬化性树脂，具有耐高温、耐燃性、耐蚀性、高机械强度、尺寸安定、电器绝缘等特性。可应用于汽车类零件、电子工业、家用电器及通讯器材的外壳及零件。

BMC (Bulk Molding Compounds) is one of the thermosetting plastic material. BMC has many properties including Heat - resistance, Flame - retardant, Erode - resistance, High Mechanical Strength, Dimensions Stability and Electrical Insulated. It is widely used into kinds of industries including Automotive parts, Electronic parts, Household appliances and Communication equipment.

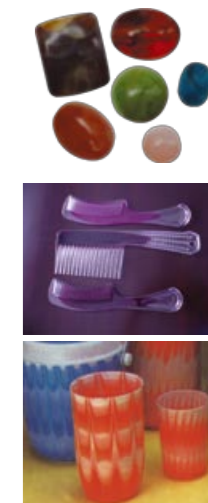


项目	NAME OF ITEM		YS1380V-BMC			YS1880V-BMC			YS2880V-BMC			YS3380V-BMC		
注射部分	Injection unit	单位	A	B	C	A	B	C	A	B	C	A	B	C
螺杆规格	Screw type													
螺杆直径	Screw diameter	mm	38	42	45	40	45	48	50	55	60	55	60	65
螺杆长径比	Screw L/D ratio	L/D	22.1	20	18.7	23.5	20.8	19.6	24	21.8	20	24.5	22.4	20.8
理论注射容积	Theoretical shot volume	cm <sup>3</sup>	192	235	270	301	381	434	608	736	876	807	960	1127
注射重量(BMC)	Shot weight	g	345	423	486	541	685	781	1094	1324	1576	1452	1728	2028
注射压力	Injection pressure	Mpa	193	158	137	220	174	153	205	170	142	203	171	145
螺杆转速	Screw rotation speed	r.p.m	5-160			5-160			5-150			5-150		
合模装置		Clamping unit												
合模力	Clamping force	KN	1380			1880			2880			3380		
移动模板行程	Opening stroke	mm	390			420			580			640		
模厚	Mould thickness	mm	150-420			160-530			200-600			230-680		
拉杆内距(水平X垂直)	Space between tie-bars (HXV)	mm	420X400			460X460			605X605			660X660		
模具定位孔	Mould register hole force	mm	125			125			160			160		
液压顶出力	Ejector force	KN	45			60			80			100		
顶出行程	Ejector stroke	mm	110			150			170			160		
顶出杆根数	Ejector quantity	PC	5			5			9			13		
其他		Others												
油泵电机功率	Motor Power	KW	10-20			12-24			18-36			23-46		
机器尺寸(长X宽X高)	Machine dimensions (LxWxH)	m	4.45X1.37X3.3			5.26X1.43X3.4			6.0X1.65X3.05			6.8X1.7X3.1		
机器重量	Machine weight	t	3.8			4.5			9.2			11		
油箱容积	Oil tank capacity	L	230			320			500			500		

注：射出量按BMC比重1.95计算；因产品不断改良，参数变更时恕不另行通知。  
Notes: The shot weight is based on BMC at specific gravity of 1.95. For product improvement, the parameters are subject to change without prior notice.

# 永生H型混双色注塑机(特种机)

YONGSHENG H Series Dual - color Injection Molding Machine for Special Purpose



## H型系列混双色注塑机 H Series Dual-color Injection Molding Machine

永生混双色成型机特点:

- 1.具有两组独立比例控制系统，使用时分别控制两组的射出压力及速度。
- 2.可选择散射、齐射、点射及交替注射，成型出各种不同的花色。
- 3.射出两组及开合模均采用线性电子尺，可准确控制开合模及射出行程。

Characteristics of Yongsheng mixed dual color plastic injection molding machines:

1. Two groups of proportional control systems independent from each other, can respectively control injection pressure and speed of the two groups.
2. With optional scattered injection, centralized injection, dotted injection and alternative injection, different patterns can be molded.
3. Injection of the two groups and mold opening/closing are carried out by using linear electronic transducer, allowing accurate control over mold opening/closing and injection stroke.

项目	NAME OF ITEM		YS-1180H		YS-1880H		YS-2280H	
注射部分	Injection unit	单位	A	B	A	B	A	B
螺杆规格	Screw type							
螺杆直径	Screw diameter	mm	34	30	42	38	42	38
螺杆长径比	Screw L/D ratio	L/D	16.5	18.7	20	22	20	22
理论注射容积	Theoretical shot volume	cm <sup>3</sup>	108	84	221	181	221	181
注射重量(PS)	Shot weight	g	98	76	201	165	201	165
注射压力	Injection pressure	Mpa	124	160	141	173	141	173
螺杆转速	Screw rotation speed	r.p.m	5-200		5-150		5-150	
合模装置		Clamping unit						
合模力	Clamping force	KN	1180		1880		2280	
移动模板行程	Opening stroke	mm	330		420		480	
模厚	Mould thickness	mm	140-380		180-550		200-565	
拉杆内距(水平X垂直)	Space between tie-bars (HXV)	mm	360X360		460X460		520X500	
模具定位孔	Mould register hole force	mm	125		125		160	
液压顶出力	Ejector force	KN	45		60		60	
顶出行程	Ejector stroke	mm	80		150		150	
顶出杆根数	Ejector quantity	PC	5		5		5	
其他		Others						
油泵电机功率	Motor Power	KW	11		18.5		18.5	
电热功率	Heater capacity	KW	9.6		16.4		16.4	
机器尺寸(长X宽X高)	Machine dimensions (LxWxH)	m	3.85X1.35X1.86		5.26X1.43X2.06		5.58X1.34X2.08	
机器重量	Machine weight	t	3		5		6.5	
油箱容积	Oil tank capacity	L	200		320		400	

注：射出量按聚苯乙烯比重1.05计算；因产品不断改良，参数变更时恕不另行通知。  
Notes: The Shot weight is based on polystyrene at specific gravity of 1.05. For product improvement, the parameters are subject to change without prior notice.



## PET瓶胚专用机

Plastic injection molding machines for PET preform

PET瓶胚专用注塑机是本公司在K系列精密注塑机基础上开发的一款专用注塑机，它继承了K系列注塑机精密、稳定、快速、节能的优点，并在结构上结合PET瓶胚的生产特点，进行了合理的更改。PET专用塑化组件，大长径比，保证低剪切条件下的高速优质塑化，现已得到广泛应用。

Plastic injection molding machines for PET preform are developed on the basis of our K series high-precision plastic injection molding machines. They have the advantages of high precision, stability and speed and energy saving of K series, and are modified in their construction according to production characteristics of PET preform. Plasticizing unit specially for PET has big length-diameter ratio, and guarantees the high-speed high-quality plasticizing under low shearing conditions.

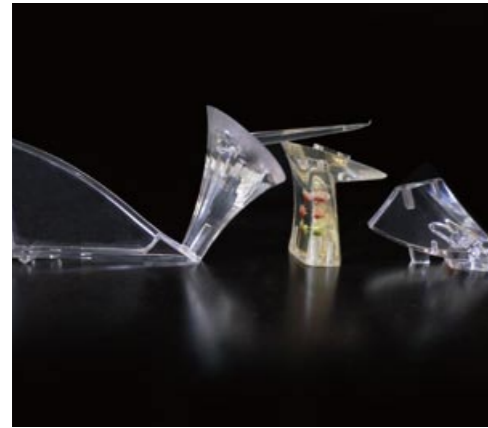


## 双伺服瓶盖专用机

Dual servo plastic injection molding machines for bottle caps

双伺服瓶盖专用机是专门为生产瓶盖及其它薄壁产品而设计的，具有高的塑化能力，高的注射速度，高的重复精度，大的顶出力，边开模边加料，大大缩短了成型周期，为客户创造良好的经济效益。

Dual servo plastic injection molding machines for bottle caps are specially designed for manufacture bottle caps and other thin-walled products. They have the advantages of high plasticizing capability, high injection speed, high repetition accuracy and strong ejection force, allow mold opening while material charging, and thus significantly reduce molding cycle and create good economic benefits for customers.



## PC透明鞋跟专用机

Plastic injection molding machines for PC transparent shoe heels

PC透明鞋跟专用机采用独特的设计，其高速、节能、稳定性能让您在市场竞争中领先起跑，如果你选用了“永生”鞋跟专用机，是您的生产力最强有力的保证。您将获得极具有竞争的优势和绝佳的投资回报。

With unique design, plastic injection molding machines for PC transparent shoe heels have the characteristics of high speed, energy saving and steady performance, and enable you to be leading in the market competition. If you select Yongsheng brand plastic injection molding machine for PC transparent shoe heels, it will guarantee your high productivity and you will gain very competitive strength and the best return on investment.



## PVC管件专用机

Plastic injection molding machines for PVC pipe fittings

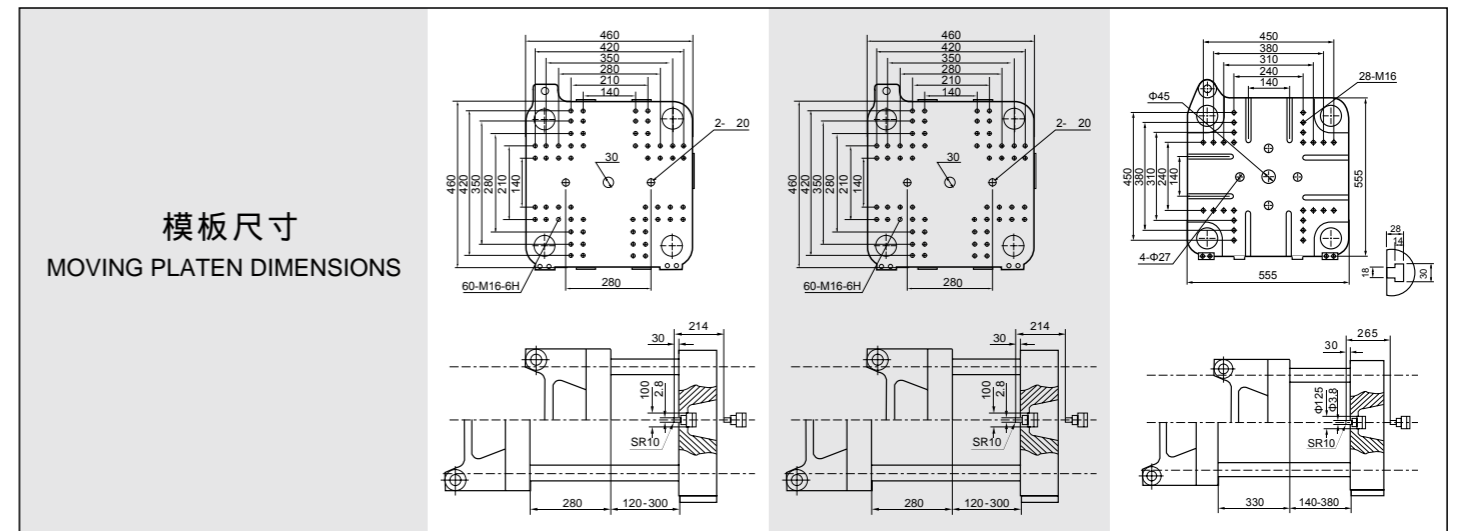
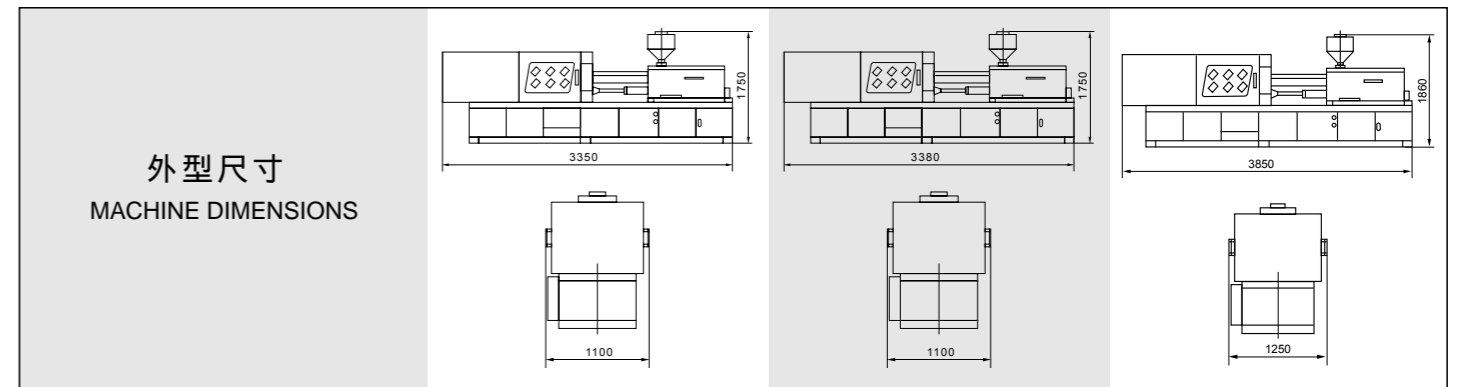
PVC管件专用机采用PVC专用一体式镀铬螺杆，可使塑料低温、热稳定、高效能塑化，具有耐腐蚀、寿命长，选用PVC专用料筒风机罩，温度更准确、稳定，从而防止料发黄变质。

专门为硬质PVC模具设计加宽钣金，方便操作者安装模具，降低客户购置成本，提高操作安全。

Plastic injection molding machines for PVC pipe fittings use integrated screws plated with chromium used for PVC, and can keep plastics at low temperature, thermal stability and high-efficiency plasticizing. They have anti-corrosion feature and long service life. Use of the barrel fan guard specially for PVC achieves more accuracy and steady temperature and thus prevents yellowing and deterioration of the materials. Wider sheet metal is designed for hard PVC moulds so that the operators can install the moulds easily, reduce customer's purchase cost and improve operation safety.

# 技术参数表 Machine specification (全连体 Full connect)

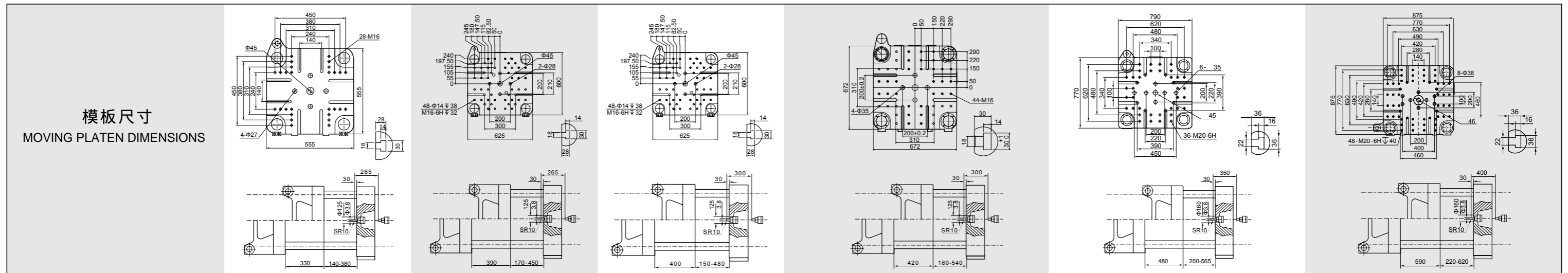
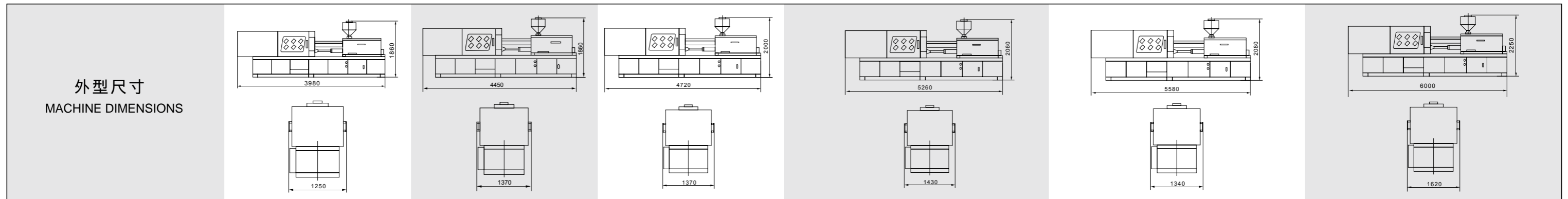
项目	NAME OF ITEM		YS700		YS760			YS1080			
注射部分	Injection unit	单位									
螺杆规格	Screw type		A	B	A	B	C	A	B	C	
螺杆直径	Screw diameter	mm	28	30	30	34	38	30	34	38	
螺杆长径比	Screw L/D ratio	L/D	21.4	20	23.3	20.6	18.4	23.3	20.6	18.4	
理论注射容积	Theoretical shot volume	cm <sup>3</sup>	80	91	109	140	175	109	140	175	
注射重量(PS)	Shot weight	g	72	82	99	127	159	99	127	159	
注射压力	Injection pressure	Mpa	192	168	218	170	136	218	170	136	
螺杆转速	Screw rotation speed	r.p.m	5-220		5-210			5-210			
合模装置	Clamping unit										
合模力	Clamping force	KN	700		760			1080			
移动模板行程	Opening stroke	mm	280		280			330			
模厚	Mould thickness	mm	120-300		120-300			150-380			
拉杆内距(水平x垂直)	Space between tie-bars (HXV)	mm	310X310		310X310			360X360			
模具定位孔	Mould register hole force	mm	100		100			125			
液压顶出力	Ejector force	KN	30		30			45			
顶出行程	Ejector stroke	mm	65		65			80			
顶出杆根数	Ejector quantity	PC	1		1			5			
其他	Others										
油泵电机功率	Motor Power	KW	7.5		9			11			
电热功率	Heater capacity	KW	5.5		7.1			7.1			
机器尺寸(长x宽x高)	Machine dimensions (LxWxH)	m	3.35X1.1X1.75		3.38X1.1X1.75			3.85X1.25X1.86			
机器重量	Machine weight	t	2		2.5			3			
油箱容积	Oil tank capacity	L	175		175			200			



注：射出量按聚苯乙烯比重1.05计算；因产品不断改良，参数变更时恕不另行通知。

Notes: The Shot weight is based on polystyrene at specific gravity of 1.05. For product improvement, the parameters are subject to change without prior notice.

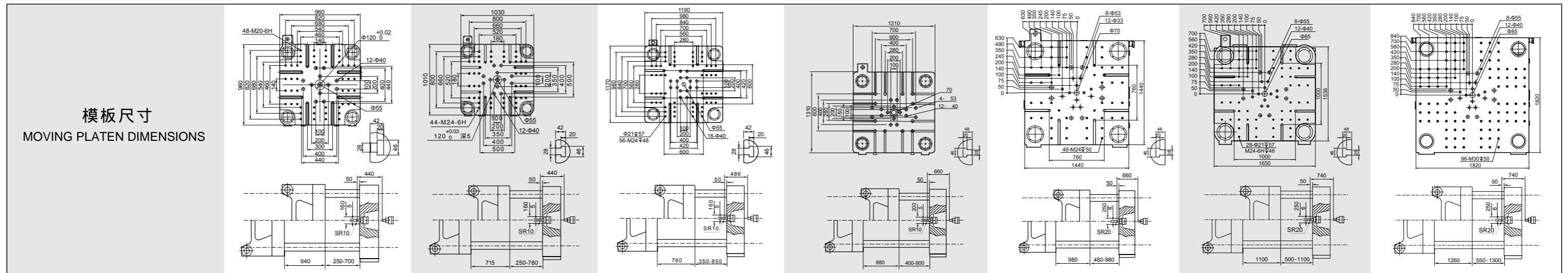
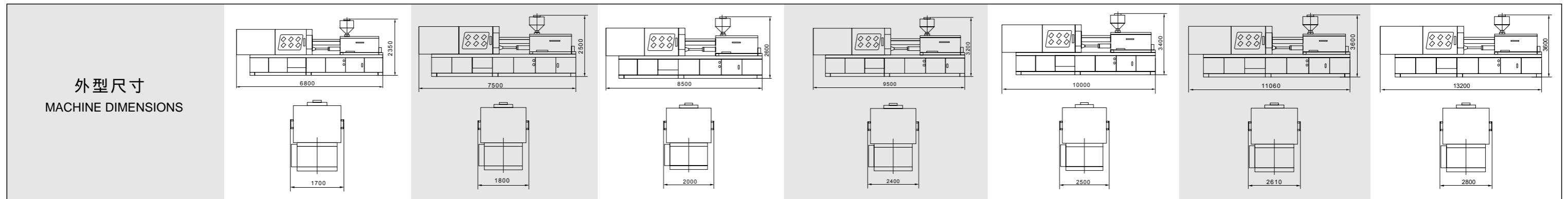
项目	NAME OF ITEM		YS1180			YS1380			YS1600			YS1880			YS2280			YS2880		
注射部分	Injection unit	单位																		
螺杆规格	Screw type		A	B	C	A	B	C	A	B	C	A	B	C	A	B	C	A	B	C
螺杆直径	Screw diameter	mm	38	42	45	38	42	45	40	42	45	40	45	48	42	45	50	50	55	60
螺杆长径比	Screw L/D ratio	L/D	22.1	20.0	18.7	22.1	20.0	18.7	23.5	22.4	20.9	23.5	20.9	19.6	23.8	22.2	20.0	24.0	21.8	20.0
理论注射容积	Theoretical shot volume	cm <sup>3</sup>	192	235	270	192	235	270	301	332	381	301	381	434	387	445	549	608	736	876
注射重量(PS)	Shot weight	g	174	213	245	174	213	245	273	302	346	273	346	400	352	404	500	553	669	800
注射压力	Injection pressure	Mpa	193	158	137	193	158	137	196	178	155	220	174	153	225	196	159	205	170	142
螺杆转速	Screw rotation speed	r.p.m	5-200			5-200			5-200			5-200			5-200			5-180		
合模装置	Clamping unit																			
合模力	Clamping force	KN	1180			1380			1600			1880			2280			2880		
移动模板行程	Opening stroke	mm	330			390			390			420			480			580		
模厚	Mould thickness	mm	140-380			170-450			170-450			180-550			200-565			220-620		
拉杆内距(水平X垂直)	Space between tie-bars (HXV)	mm	360X360			420X400			420X400			460X460			520X500			605X605		
模具定位孔	Mould register hole force	mm	125			125			125			125			160			160		
液压顶出力	Ejector force	KN	45			45			45			60			60			80		
顶出行程	Ejector stroke	mm	80			110			110(140定制 made to customer)			150			150			170		
顶出杆根数	Ejector quantity	PC	5			5			5			5			5			5		
其他	Others																			
油泵电机功率	Motor Power	KW	15			15			17			18.5			22			30		
电热功率	Heater capacity	KW	8.3			8.3			11			11			12.6			15.1		
机器尺寸(长宽高)	Machine dimensions (LxWxH)	m	3.98X1.25X1.86			4.45X1.37X1.86			4.72X1.37X2			5.26X1.43X2.06			5.58X1.34X2.08			6.0X1.62X2.25		
机器重量	Machine weight	t	3.5			3.8			4			5			6.4			9		
油箱容积	Oil tank capacity	L	200			230			250			320			400			500		



注：射出量按聚苯乙烯比重1.05计算；因产品不断改良，参数变更时恕不另行通知。

Notes: The Shot weight is based on polystyrene at specific gravity of 1.05. For product improvement, the parameters are subject to change without prior notice.

项目	NAME OF ITEM		YS3380			YS3800			YS5200			YS6380			YS7800			YS10000			YS13000		
注射部分	Injection unit	单位																					
螺杆规格	Screw type		A	B	C	A	B	C	A	B	C	A	B	C	A	B	C	A	B	C	A	B	C
螺杆直径	Screw diameter	mm	60	65	70	60	65	70	75	80	85	90	95	100	90	100	110	100	112	125	110	120	135
螺杆长径比	Screw L/D ratio	L/D	22.5	20.8	19.3	24.2	22.3	20.7	23.3	21.9	20.6	22.2	21	20	24.4	22.0	20.0	26.0	23.2	20.8	25.8	23.7	21.0
理论注射容积	Theoretical shot volume	cm <sup>3</sup>	918	1077	1250	1102	1293	1500	1987	2260	2552	2797	3177	3454	3306	4082	4939	4435	5563	6930	5889	7008	8870
注射重量(PS)	Shot weight	g	835	980	1137	1002	1176	1365	1808	2056	2322	2545	2836	3143	3008	3714	4494	4035	5062	6306	5358	6377	8071
注射压力	Injection pressure	Mpa	171	145	125	201	171	147	179	157	139	180	161	146	207	168	138	201	160	128	190	160	126
螺杆转速	Screw rotation speed	r.p.m		5-180			5-180			5-160			5-150			5-130			5-120			5-110	
合模装置	Clamping unit																						
合模力	Clamping force	KN		3380			3800			5200			6380			7800			10000			13000	
移动模板行程	Opening stroke	mm		640			715			760			880			980			1100			1260	
模厚	Mould thickness	mm		250-700			250-780			350-850			400-900			450-980			500-1100			600-1300	
拉杆内距(水平X垂直)	Space between tie-bars (HXV)	mm		660X660			720X700			800X780			860X860			980X980			1100X1050			1260X1260	
模具定位孔	Mould register hole force	mm		160			160			160			200			250			250			250	
液压顶出力	Ejector force	KN		100			100			160			195			195			215			245	
顶出行程	Ejector stroke	mm		160			180			180			260			260			320			320	
顶出杆根数	Ejector quantity	PC		9			13			17			17			21			21			21	
其他	Others																						
油泵电机功率	Motor Power	KW		30			37			45			30+30			37+37			45+45			55+55	
电热功率	Heater capacity	KW		20.7			23.4			33.2			36.5			51.8			64.4			68	
机器尺寸(长宽高)	Machine dimensions (LxWxH)	m		6.8X1.7X2.35			7.5X1.8X2.5			8.5X2X2.6			9.5X2.4X3.2			10.0X2.5X3.4			11.06X2.61X3.6			13.2X2.8X3.6	
机器重量	Machine weight	t		11			14			20			30			39			48			66	
油箱容积	Oil tank capacity	L		500			850			1000			1300			1600			2000			2600	



注：射出量按聚苯乙烯比重1.05计算；因产品不断改良，参数变更时恕不另行通知。

Notes: The Shot weight is based on polystyrene at specific gravity of 1.05. For product improvement, the parameters are subject to change without prior notice.